

**Certificate of Performance**

**TON 2 Reagent**

**Product Code** KR 104  
**Lot Number** 4211

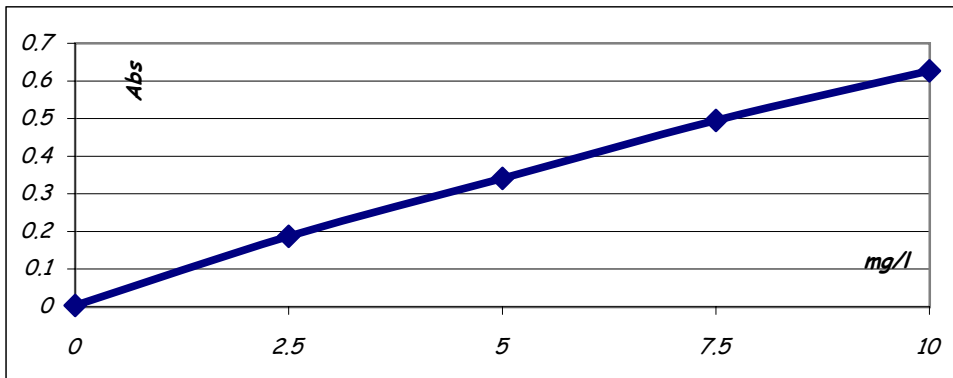
**Date** 10.12.2004

**Expiry Date** 25.06.2005

Reagent	Lot Number
TON 1	4210
TON 2	4211
TON 3	4205
<b>Test Method</b>	LMTPO3
<b>Test Instrument</b>	Konelab 20
<b>Serial Number</b>	P4919028

Std. Value	Lot #	Abs.
0		0.003
2.5	TON2.5 272 04	0.187
5	TON5.0 272 04	0.341
7.5	TON7.5 272 04	0.495
10	TON10 272 04	0.627

**Calibration Curve**



Test	Result	Specification	Pass / Fail
Intercept	0.003	-0.005 to 0.01	Pass
Sensitivity Abs/ppm			
0 - 2.5 mg/l	0.0075	0.0055 to 0.0080	Pass
2.5 - 5.0 mg/l	0.0062	0.0060 to 0.0080	Pass
5.0 - 7.5 mg/l	0.0062	0.0050 to 0.0075	Pass
7.5 - 10.0 mg/l	0.0053	0.0050 to 0.0070	Pass

*Tom Russell.*

Dr. T. Russell