

## Certificate of Performance

### TON 3

Product Code KR105

**Date** 03.04.2007

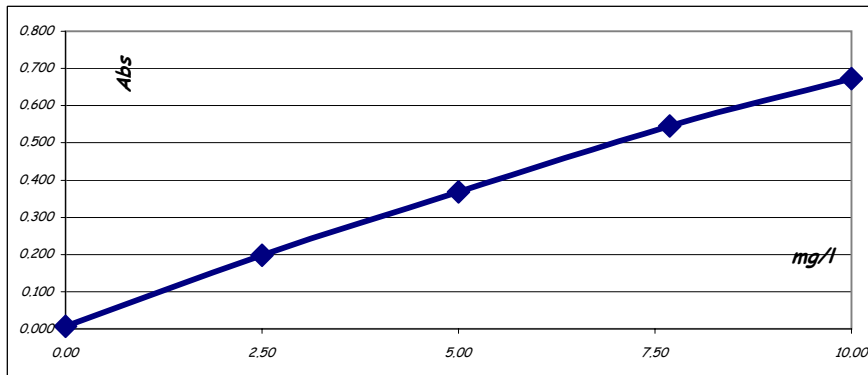
**Expiry Date** 03.04.2008

Reagent	Lot Number
TON 1	7069
TON 2	7070
TON 3	7071
<b>Test Method</b>	LMTPO3
<b>Test Instrument</b>	Konelab 20
<b>Serial Number</b>	P4919028

Std. Value	Lot #	Abs.
0.00		0.007
2.50	TON 100 02 07	0.197
5.00	TON 100 02 07	0.369
7.69	TON 100 02 07	0.545
10.00	TON 100 02 07	0.672

\*serial dilution

### Calibration Curve



Test	Result	Specification	Pass / Fail
Intercept	0.007	-0.005 to 0.01	Pass
Sensitivity Abs/ppm			
0 - 2.50 mg/l	0.0760	0.0550 to 0.0800	Pass
2.50 - 5.00 mg/l	0.0688	0.0600 to 0.0800	Pass
5.00 - 7.69 mg/l	0.0654	0.0550 to 0.0800	Pass
7.69 - 10.0 mg/l	0.0550	0.0500 to 0.0700	Pass

**Notes** Store between 2 & 8 °C  
 \*Stable on Board TON 1 - 1 day  
                   \* TON 2 & TON 3 - 5 day:  
 Keep Tightly Sealed when not in use.  
 Do not return unused portions to container  
 Barcode ID- TON 1 103; TON 2 104; TON 3 105  
 \* Based on results obtained in our Research Facility



Dr. T. Russell