

Certificate of Performance

TON 3 Reagent

Product Code KR 105
Lot Number 6004

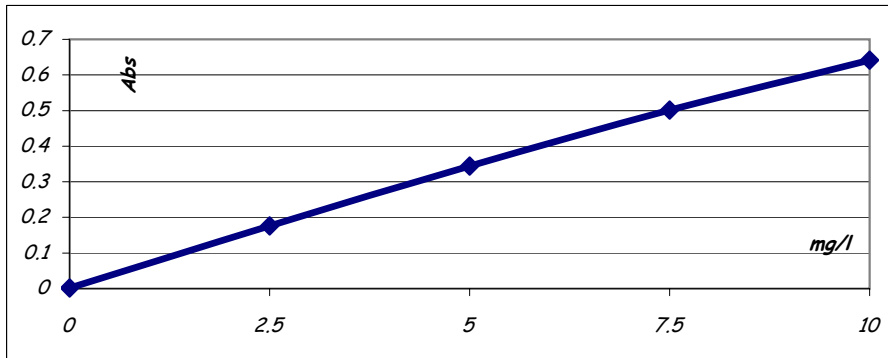
Date 10.01.2006

Expiry Date 10.01.2007

Reagent	Lot Number
TON 1	5166
TON 2	6003
TON 3	6004
Test Method	LMTPO3
Test Instrument	Konelab 20
Serial Number	P4919028

Std. Value	Lot #	Abs.
0		0.002
2.5	TON2.5 332 05	0.176
5	TON5.0 332 05	0.344
7.5	TON7.5 332 05	0.501
10	TON10 332 05	0.642

Calibration Curve



Test	Result	Specification	Pass / Fail
Intercept	0.002	-0.005 to 0.01	Pass
Sensitivity	Abs/ppm		
	0 - 2.5 mg/l	0.0055 to 0.0080	Pass
	2.5 - 5.0 mg/l	0.0060 to 0.0080	Pass
	5.0 - 7.5 mg/l	0.0050 to 0.0075	Pass
	7.5 - 10.0 mg/l	0.0050 to 0.0070	Pass

Notes Store between 2 & 8 °c
*Stable on Board 5 days
Barcode ID = 105
* Based on results obtained in our Research Facility

Tom Russell

Dr. T. Russell