

Certificate of Performance

TON 2 Reagent

Product Code KR 104
Lot Number 6003

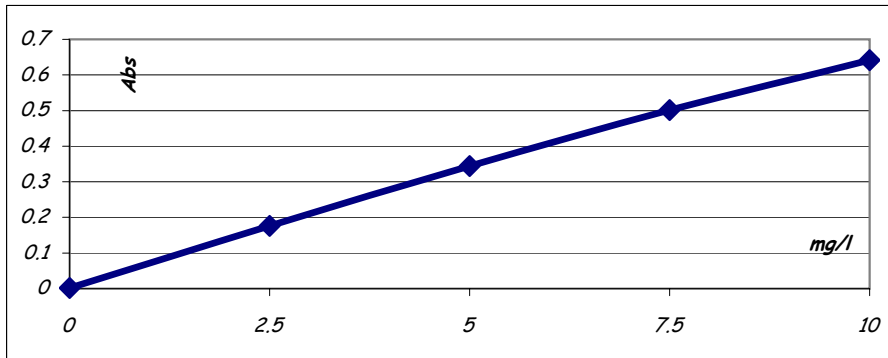
Date 10.01.2006

Expiry Date 10.01.2007

| Reagent | Lot Number |
|------------------------|------------|
| TON 1 | 5166 |
| TON 2 | 6003 |
| TON 3 | 6004 |
| Test Method | LMTPO3 |
| Test Instrument | Konelab 20 |
| Serial Number | P4919028 |

| Std. Value | Lot # | Abs. |
|------------|---------------|-------|
| 0 | | 0.002 |
| 2.5 | TON2.5 332 05 | 0.176 |
| 5 | TON5.0 332 05 | 0.344 |
| 7.5 | TON7.5 332 05 | 0.501 |
| 10 | TON10 332 05 | 0.642 |

Calibration Curve



| Test | Result | Specification | Pass / Fail |
|-------------|-----------------|------------------|-------------|
| Intercept | 0.002 | -0.005 to 0.01 | Pass |
| Sensitivity | Abs/ppm | | |
| | 0 - 2.5 mg/l | 0.0055 to 0.0080 | Pass |
| | 2.5 - 5.0 mg/l | 0.0060 to 0.0080 | Pass |
| | 5.0 - 7.5 mg/l | 0.0050 to 0.0075 | Pass |
| | 7.5 - 10.0 mg/l | 0.0050 to 0.0070 | Pass |

Notes Store between 2 & 8 °c
*Stable on Board 5 days
Barcode ID = 104
* Based on results obtained in our Research Facility

Tom Russell.

Dr. T. Russell