

### Certificate of Performance

#### TON 2 Reagent

**Product Code** KR 104  
**Lot Number** 5033

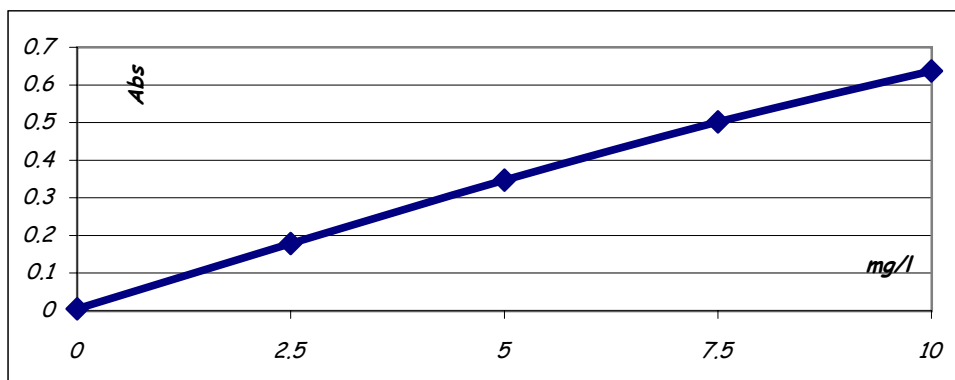
**Date** 17.02.2005

**Expiry Date** 28.08.2005

Reagent	Lot Number
TON 1	5032
TON 2	5033
TON 3	5034
<b>Test Method</b>	LMTPO3
<b>Test Instrument</b>	Konelab 20
<b>Serial Number</b>	P4919028

Std. Value	Lot #	Abs.
0		0.005
2.5	TON2.5 038 05	0.179
5	TON5.0 038 05	0.347
7.5	TON7.5 038 05	0.502
10	TON10 038 05	0.637

#### Calibration Curve



Test	Result	Specification	Pass / Fail
Intercept	0.005	-0.005 to 0.01	Pass
Sensitivity Abs/ppm			
0 - 2.5 mg/l	0.0072	0.0055 to 0.0080	Pass
2.5 - 5.0 mg/l	0.0067	0.0060 to 0.0080	Pass
5.0 - 7.5 mg/l	0.0062	0.0050 to 0.0075	Pass
7.5 - 10.0 mg/l	0.0054	0.0050 to 0.0070	Pass

**Notes** Store between 2 & 8 °C  
 \*Stable on Board 5 days  
 Barcode ID = 104  
 \* Based on results obtained in our Research Facility

*Tom Russell*  
 \_\_\_\_\_  
 Dr. T. Russell