

### Certificate of Performance

#### TON 2 Reagent

Product Code **KR 104**  
 Lot Number **5010**

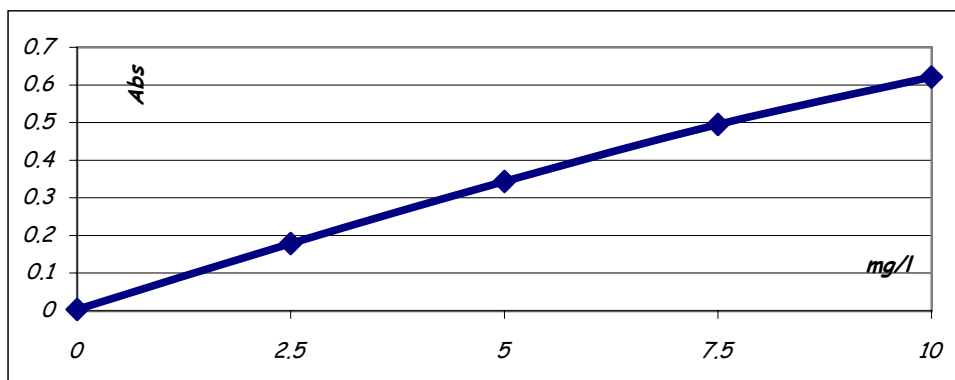
Date **24.01.2005**

Expiry Date **07.08.2005**

Reagent	Lot Number
TON 1	5009
TON 2	<b>5010</b>
TON 3	5011
Test Method	LMTPO3
Test Instrument	Konelab 20
Serial Number	P4919028

Std. Value	Lot #	Abs.
0		0.003
2.5	TON2.5 349 04	0.179
5	TON5.0 349 04	0.344
7.5	TON7.5 349 04	0.495
10	TON10 349 04	0.621

#### Calibration Curve



Test	Result	Specification	Pass / Fail
Intercept	0.003	-0.005 to 0.01	<b>Pass</b>
Sensitivity			
Abs/ppm			
0 - 2.5 mg/l	0.0072	0.0055 to 0.0080	<b>Pass</b>
2.5 - 5.0 mg/l	0.0066	0.0060 to 0.0080	<b>Pass</b>
5.0 - 7.5 mg/l	0.0060	0.0050 to 0.0075	<b>Pass</b>
7.5 - 10.0 mg/l	0.0050	0.0050 to 0.0070	<b>Pass</b>

Notes     Store between 2 & 8 °c  
 \*Stable on Board 5 days  
 Barcode ID = 104  
 \* Based on results obtained in our Research Facility

*Tom Russell.*  
 \_\_\_\_\_  
 Dr. T. Russell